

**CONTROLLED
AIR DESIGN**
controlledairdesign.com

AC100 ATEX Z22





Depureco Industrial Vacuums USA

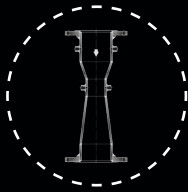
19121 Marketplace Avenue, Building 1, Suite 165
Plum Creek Business Park • Kyle • TX 78640

www.depurecousa.com
info@depurecousa.com

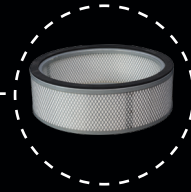


3720 in²

FILTER

26 gal

CAPACITY



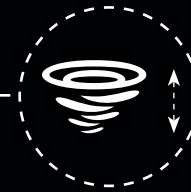
SUCTION UNIT



**[OPTIONAL]
FILTER CARTRIDGE
HEPA H14**



**M CLASS
ANTISTATIC
STAR FILTER**



**TANGENTIAL INLET
WITH CYCLONE
SYSTEM**

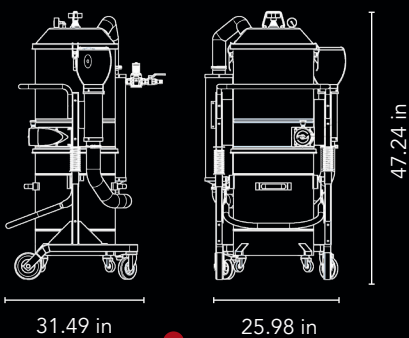
 **STAINLESS STEEL BIN
AISI 304**


26gal



**ALL COMPONENTS
ARE GROUNDED**

HIGHLY TRANSPORTABLE



 **Weight: 145 lbs**

DETACHABLE BIN



NFPA 652 Compliance



ATEX Marking:
II 3 G/D Ex htc III B T100
°C Gc/Dc

SPEC SHEET

		Units	AC100 Z22
Suction type			Venturi pipe
Atex Marking			II 3 G/D Ex htc III B T100°C Gc/Dc
Pressure required		inH2O	2500-3000
Maximum vacuum		inH2O	200
Maximum air flow		CFM	282.51
Inlet		Ø in	3.15
Noise level - (EN ISO 3744)		dB(A)	70
Bin capacity		gal	26
Dimensions		in	25.98 x 31.49
Height		in	47.24
Weight		lb	145
Primary filter			
Type			Star filter
Surface area		in ² in	3720
(Class EN 60335-2-69)			M Class
Media			Antistatic polyester
Filter cleaning			Filter shaker
Absolute filter - Optional			
(Class - EN 1822)			H14
Media			Fiberglass
Surface aerea		in ²	Opt H14

ACCESSORIES



ATEX STARTER KIT
Ø 1.75 in



ATEX KIT PRO
Ø 1.75 in

OPTIONAL



GX
AISI 304 BIN AND CHAMBER



PTFE ANT
Antistatic PTFE filter
EN 60335-2-69



H 14
Absolute filter
EN 1822-5