



---

# Customer information packet

## VL5030

1.5HP, 3450RPM, 1PH, 60HZ, 56C, 3528L, XPFC, F1  
Class - CLI GP D; CLII GP F,G  
Division - Division I

## Specifications

Enclosure	XPFC
Frame	56C
Frame Material	Steel
Frequency	60.00 Hz
Motor Letter Type	Cap Start, Induction Run
Output @ Frequency	1.500 HP @ 60 HZ
Phase	1
Synchronous Speed @ Frequency	3600 RPM @ 60 HZ
Voltage @ Frequency	230.0 V @ 60 HZ
	208.0 V @ 60 HZ
	115.0 V @ 60 HZ
XP Class and Group	CLI GP D; CLII GP F,G
XP Division	Division I
Agency Approvals	CSA
	UL
Ambient Temperature	40 °C
Auxillary Box	No Auxillary Box
Auxillary Box Lead Termination	None
Base Indicator	No Mounting
Bearing Grease Type	Polyrex EM (-20F +300F)
Blower	None
Current @ Voltage	7.900 A @ 208.0 V
	7.500 A @ 230.0 V
	15.000 A @ 115.0 V
Design Code	L
Drip Cover	No Drip Cover
Duty Rating	CONT
Efficiency @ 100% Load	70.0 %
Electrically Isolated Bearing	Not Electrically Isolated
Feedback Device	NO FEEDBACK
Front Face Code	Standard
Front Shaft Indicator	None

## Part detail

Revision	U
Type	AC
Mech. spec.	35E373
Base	
Status	PRD/A
Elec. spec.	35WG0199
Layout	35LYE373
Eff. date	06-08-2023
CD Diagram	CD0001
Poles	02
Leads	4#16 A PH,2#18 B PH
Proprietary	False
Created date	01-01-0001

Heater Indicator	No Heater
High Voltage Full Load Amps	7.5 a
Insulation Class	B
Inverter Code	Not Inverter
KVA Code	H
Lifting Lugs	No Lifting Lugs
Locked Bearing Indicator	Locked Bearing
Motor Lead Exit	Ko Box
Motor Lead Quantity/Wire Size	4 @ 16 AWG, A PH
Motor Lead Termination	Flying Leads
Motor Standards	NEMA
Motor Type	3528L
Mounting Arrangement	F1
Number of Poles	2
Overall Length	15.17 IN
Power Factor	82
Product Family	Hazardous Location Motor
Pulley End Bearing Type	Ball
Pulley Face Code	C-Face
Pulley Shaft Indicator	Standard
Rodent Screen	None
RoHS Status	ROHS COMPLIANT
Service Factor	1.00
Shaft Diameter	0.625 IN
Shaft Extension Location	Pulley End
Shaft Ground Indicator	No Shaft Grounding
Shaft Rotation	Reversible
Shaft Slinger Indicator	Shaft Slinger
Speed	3450 rpm
Speed Code	Single Speed
Starting Method	Direct on line
Thermal Device - Bearing	None
Thermal Device - Winding	Normally Closed Thermostat
Vibration Sensor Indicator	No Vibration Sensor

<b>Winding Thermal 1</b>	<b>None</b>
<b>Winding Thermal 2</b>	<b>None</b>
<b>XP Temp Code</b>	<b>T3C</b>

**Nameplate**

NP1426XPSL				
<b>NO.</b>		<b>CC</b>		
<b>SER.</b>				
<b>SPEC.</b>	35E373-0199G2			
<b>CAT.NO.</b>	VL5030			
<b>HP</b>	1.5	<b>T. CODE</b>	T3C	
<b>VOLTS</b>	115/208-230			
<b>AMPS</b>	15/7.9-7.5			
<b>RPM</b>	3450			
<b>HZ</b>	60	<b>PH</b>	1	<b>CL B</b>
<b>SER.F.</b>	1.00	<b>DES</b>	L	<b>CODE H</b>
<b>RATING</b>	40C AMB-CONT			
<b>FRAME</b>	56C	<b>NEMA-NOM-EFF</b>		70
<b>USABLE AT 208V</b>	N/A	<b>PF</b>	82	
<b>BLANK</b>				

**AC Induction Motor Performance Data**

Record # 8048

Typical performance - not guaranteed values

Winding: 35WG0199-R007		Type: 3528L	Enclosure: XPFC
<b>Nameplate Data</b>		<b>230 V, 60 Hz: High Voltage Connection</b>	
Rated Output (HP)	1.5	Full Load Torque	2.3 LB-FT
Volts	115/208-230	Start Configuration	direct on line
Full Load Amps	15/7.9-7.5	Breakdown Torque	5.6 LB-FT
R.P.M.	3450	Pull-up Torque	5.2 LB-FT
Hz	60 Phase	Locked-rotor Torque	5.5 LB-FT
NEMA Design Code	L KVA Code	Starting Current	42 A
Service Factor (S.F.)	1	No-load Current	4.5 A
NEMA Nom. Eff.	70 Power Factor	Line-line Res. @ 25°C	1.26 Ω A Ph 1.23 Ω B Ph
Rating - Duty	40C AMB-CONT	Temp. Rise @ Rated Load	70°C

**Load Characteristics 230 V, 60 Hz, 1.5 HP**

% of Rated Load	25	50	75	100	125	150
Power Factor	47	64	73	80	84	86
Efficiency	51.9	65.3	68.4	71.2	70.6	68.4
Speed	3567	3541	3514	3475	3439	3397
Line amperes	5	5.8	6.9	8.6	10.2	12.1

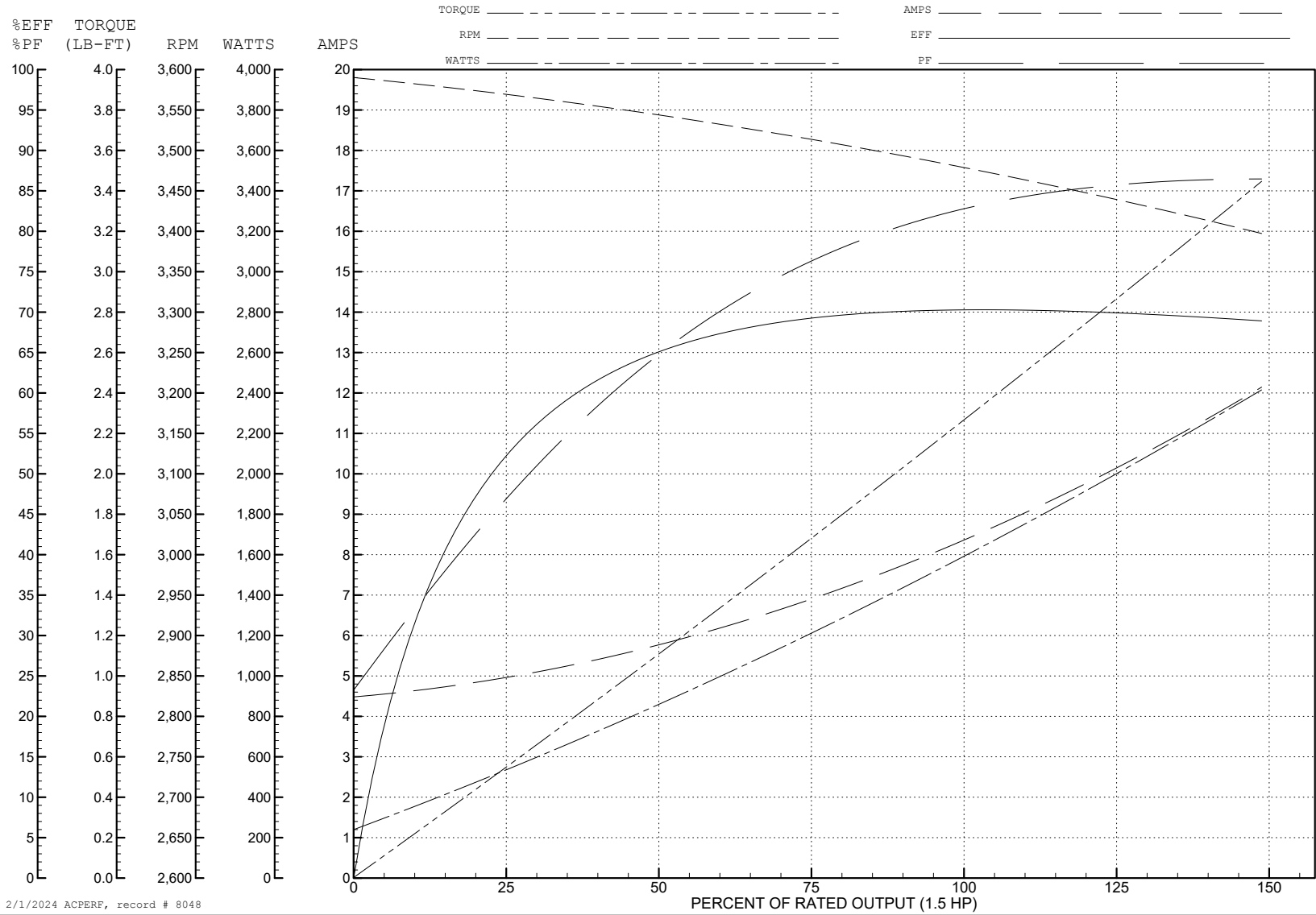
ABB Motors and Mechanical Inc.

WINDING # 35WG0199

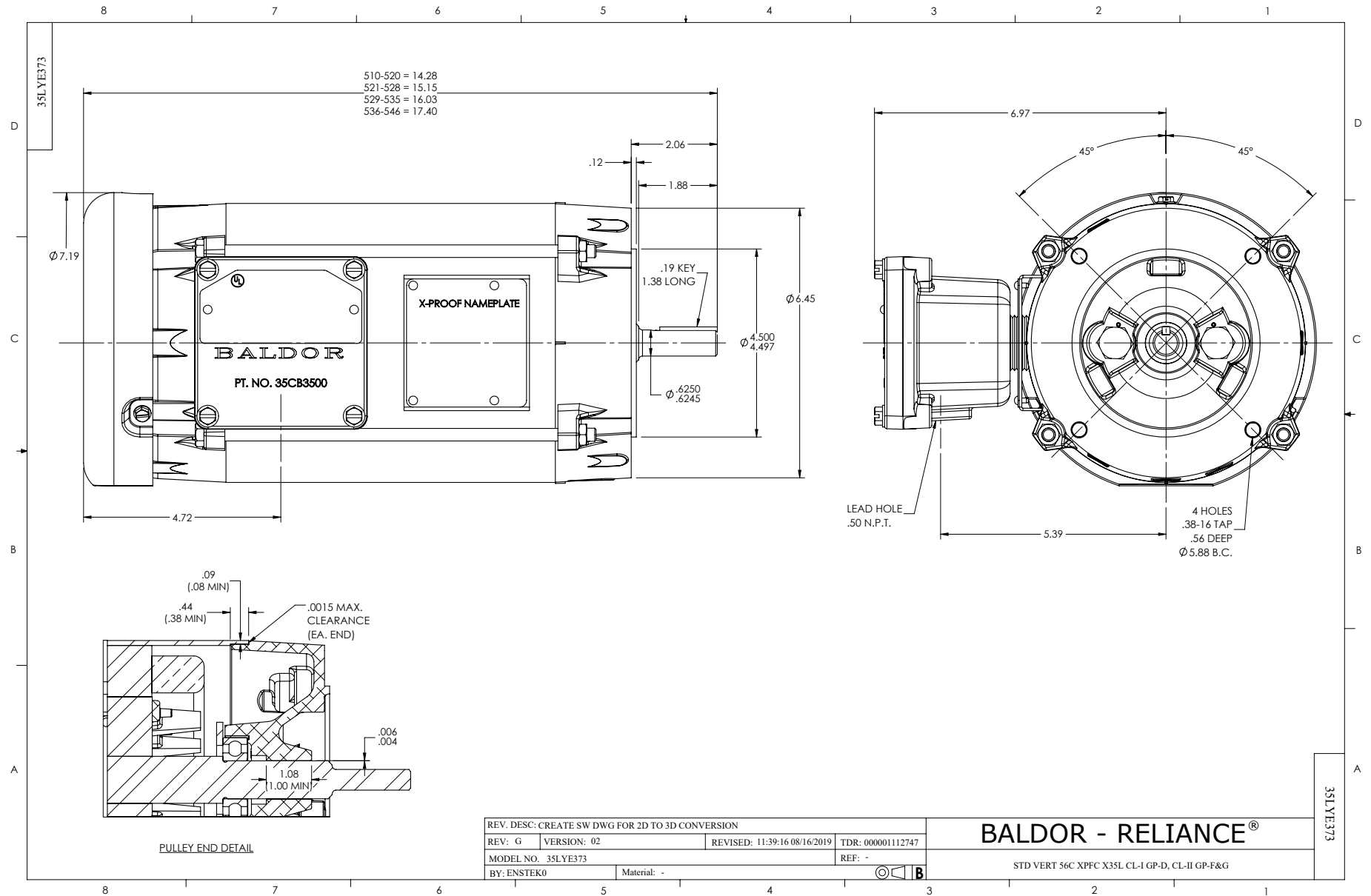
Typical performance - not guaranteed values.

1.5 HP 1 PH 60 HZ 3450 RPM 230 V 3528L

TORQUES (LB-FT): PO=5.6 PU=5.2 LR=5.5 LRA=42

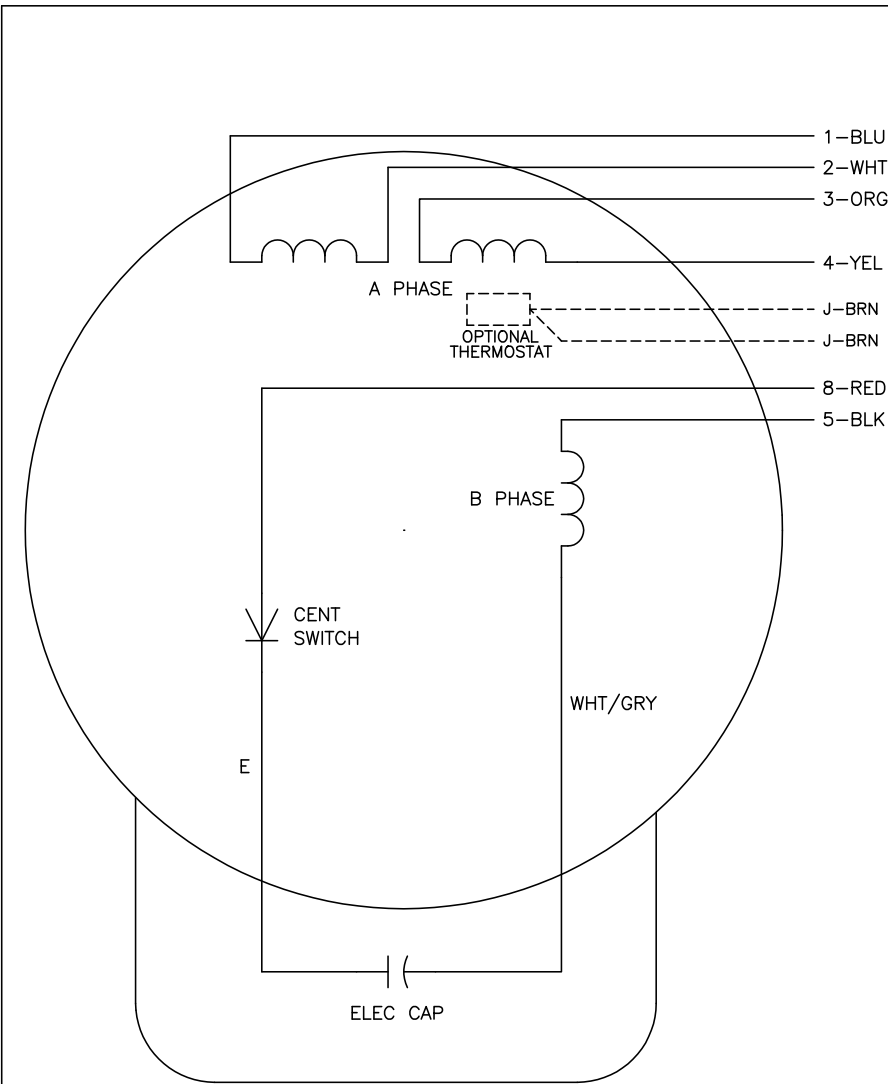


2/1/2024 ACPERF, record # 8048





CD0001



	LINE A	LINE B	JOIN
HIGH STD	1	4,5	2,3,8
HIGH OPP	1	4,8	2,3,5
LOW STD	1,3,8	2,4,5	-
LOW OPP	1,3,5	2,4,8	-

**NOTES:**

1. STANDARD ROTATION IS CCW FACING END OPPOSITE SHAFT EXTENSION.
2. OPTIONAL THERMOSTAT IS PROVIDED WHEN SPECIFIED.
3. MULTIPLE CAPACITORS ARE CONNECTED IN PARALLEL UNLESS OTHERWISE SPECIFIED.
4. LEAD COLORS ARE OPTIONAL. LEADS MUST ALWAYS BE NUMBERED AS SHOWN.

REV. DESC: REVISE TO SHOW OPTIONAL COLORS			
REV. LTR: D	BY: JLP	REVISED: 04/08/99 1:16	TDR: 0178636
100000		FILE: AAA00007405	MDL: -
		MTL: -	

**BALDOR ELECTRIC Co.**

TYPE L, DV, REV, 6 LEADS

CD0001