

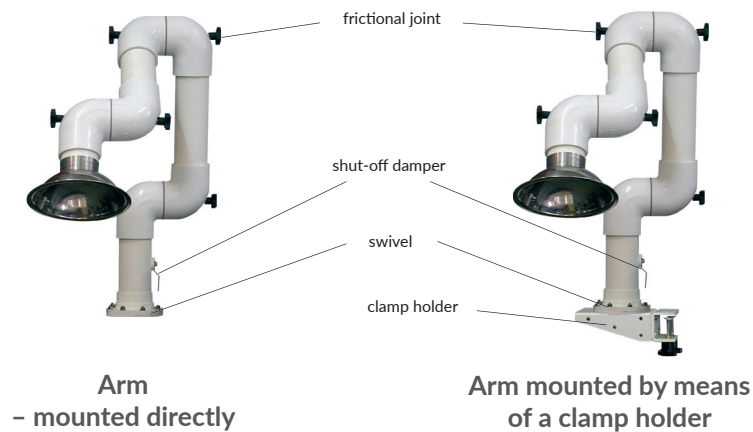
ERGO-MINI – extraction arms



Purpose

Acid-proof extraction arms ERGO-MINI are designed for removal the dust and gas impurities arising at workplaces during processes of not large emission of contamination. They are manufactured in two diameters Ø50 and Ø75. Due to the self-adjustable frictional joints and swivel, User can set the arm in the most convenient work position. The elements of the extraction arm are constructed

of acid-proof materials (i.e. PVC, polyamide, stainless steel). They can be applied among others in chemical-, pharmaceutical-, electronic industries as well as in jewellery workshops. The extraction arm can work with an appropriate extraction fan that serves a main collecting ductwork, where other several to several dozen extraction arms are connected.



Structure

Extraction arms are manufactured in versions varying in diameter and workrange. The ERGO-MINI arm consists of subsequent parts:

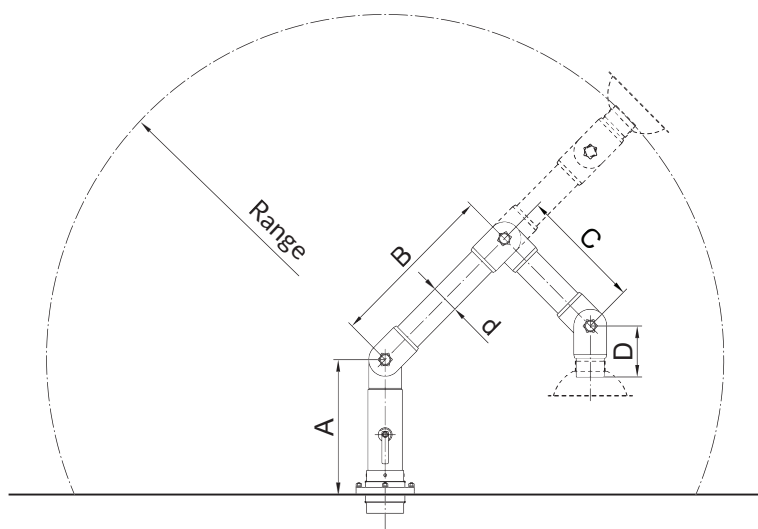
- swivel with a vertical pipe,
- three adjustable pipe segments,
- elbow joints with adjustment of the frictional moment,
- clamp holder (delivery on demand),
- replaceable hoods (delivery on demand).

The pipe of the swivel contains a shut-off damper and can make a full rotation around the vertical axis.

The arm can be mounted to the tabletop in following ways:

- directly (through a mounting flange),
- by means of clamp holder.

ERGO-MINI

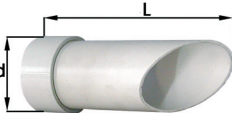




ERGO-MINI/K-50/3, ERGO-MINI/K-75/3


Technical data

| Type | Part no. | Workrange [mm] | d [mm] | A [mm] | B [mm] | C [mm] | D [mm] | Weight [kg] | Flow resistances at volume flow 120 m³/h [Pa] |
|-----------------------|----------|----------------|--------|--------|--------|--------|--------|-------------|---|
| ERGO-MINI/K-50/3-950 | 810R53 | 720 | 60 | 280 | 360 | 260 | 100 | 2,5 | 490 |
| ERGO-MINI/K-75/3-1150 | 810R59 | 950 | 80 | 265 | 460 | 360 | 130 | 3,0 | 220 |

Replaceable hoods

| Sort | Type | Part no. | Dimension [mm] | | | Weight [kg] |
|---|---------|----------|----------------|-----|-----|-------------|
| | | | d | D | L | |
|  | SS-50/K | 810S70 | 70 | — | 180 | 0,12 |
| | SS-75/K | 810S71 | 85 | — | 200 | 0,19 |
|  | SM-50/K | 810S72 | 64 | 158 | 70 | 0,12 |
| | SM-75/K | 810S73 | 76 | 200 | 80 | 0,18 |
|  | SD-50/K | 810S74 | 64 | 182 | 80 | 0,15 |
| | SD-75/K | 810S75 | 76 | 222 | 90 | 0,20 |

Clamp holder (one size for dimensions 50 mm and 75 mm)

|  | Type | Part no. | h [mm] | Weight [kg] |
|--|------|----------|--------|-------------|
| | VK/K | 810U06 | 30 | 0,45 |

NOTE: Ordering the devices and accessories specify their name and Part.No.