

Controlled Air Design
(800) 635-0298
controlledairdesign.com



CLEANING MACHINES FOR UNCLASSIFIED (GENERAL PURPOSE) AREAS

All the electrical components are certified by an NRTL such as UL, CSA or ETL

Complies with NFPA 77 "Recommended Practice on Static Electricity"



Characteristics



Continuous
Duty



HEPA -
Included



High Filtration
Efficiency Unit



Dry Recovery



Detachable
Tank



SD Accessories
- Included

- Complies with NFPA 652 paragraph 8.4.2.2.1.7 and NFPA 654 paragraph 8.4.3.7 (1) to (7)
- Industrial continuous duty vacuum system
- Very powerful machine capable of working with large diameter suction hoses up to 70 mm. Perfect for Food industry, machine shops, Plastics industry, Ceramics industry, printing, textiles, heavy clean-up, etc.
- Regenerative blower with TEFC induction motor rated for continuous duty
- Includes a star shaped main filter
- Manual Filter Shaker (MFS) system
- HEPA filter with an efficiency of 99.995% at 0.3 micron. Tested IEST-RP-CC001. H14 by MPPS method as per EN 1822 and OSHA compliant. All of our HEPA vacuum systems are aerosol leak tested before leaving our facility - included
- Detachable recovery tank (DT) for easy disposal of recovered materials
- Sight glass installed on recovery tank
- Exhaust silencer for a quiet operation
- Includes a complete static dissipative tool kit

Specifications

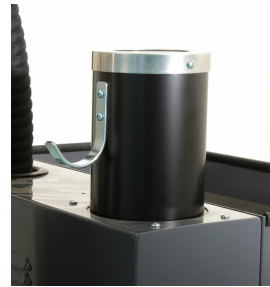
TV-775 (DT) MFS HEPA ORDLOC-652	112080A1-652	112080A5-652	112082A1-652	112082A5-652
Model Name	TV-775 (DT) MFS HEPA ORDLOC-652	TV-775 (DT) MFS HEPA ORDLOC-652	TV-775 (DT) MFS HEPA ORDLOC-652	TV-775 (DT) MFS HEPA ORDLOC-652
Type (Powerhead)	Electric	Electric	Electric	Electric
TEFC Motor	Yes	Yes	Yes	Yes
Voltage	460 V	575 V	460 V	575 V
Hertz	60 Hz	60 Hz	60 Hz	60 Hz
Phase	Three	Three	Three	Three
Wattage	6300 W	6300 W	8600 W	8600 W
Power	8.5 HP	8.5 HP	11.5 HP	11.5 HP
Amperage	13.3 A	10.4 A	17.3 A	13.6 A
Air Flow	353 CFM	353 CFM	494 CFM	494 CFM
Vacuum Pressure	108 " H ₂ O	108 " H ₂ O	108 " H ₂ O	108 " H ₂ O
VRV Setting	93 " H ₂ O	93 " H ₂ O	93 " H ₂ O	93 " H ₂ O
Sound Level	74 dB(A)	74 dB(A)	76 dB(A)	76 dB(A)
Plug Type	Not Included	Not Included	Not Included	Not Included
Suction Inlet	70 mm	70 mm	70 mm	70 mm
Cart Type	Detachable Tank (DT)	Detachable Tank (DT)	Detachable Tank (DT)	Detachable Tank (DT)
Filter Cleaning	Manual Filter Shaker (MFS)	Manual Filter Shaker (MFS)	Manual Filter Shaker (MFS)	Manual Filter Shaker (MFS)
Dry Recovery - Tank	26 Gal	26 Gal	26 Gal	26 Gal
Length	55 "	55 "	55 "	55 "
Width	26.5 "	26.5 "	26.5 "	26.5 "
Height	58 "	58 "	58 "	58 "
Weight (Vacuum Only)	550 lb.	550 lb.	550 lb.	550 lb.
Cord Length	30 ft.	30 ft.	30 ft.	30 ft.

Please note that specifications are subject to change without notice

Use only recommended tools & accessories



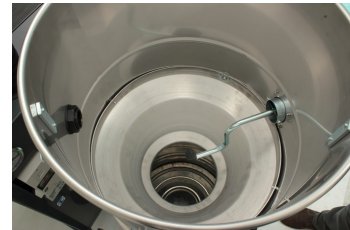
Filter Blockage Indicator Gage. Manual Starter with Overload Protection



Integrated Silencer



Side Mounted Manual Filter Shaker



Side Mounted Manual Filter Shaker (Internal View)



Sight Glass on Recovery Tank



HEPA Filter - Included



Tangential Suction Inlet, 70 mm, Aluminum



Conductive Star Shaped Filter with Cage for ORDLOC 652 - Included



70 mm static conductive tool kit - Included