

TX 750 P C2 D2



Depureco Industrial Vacuums USA

19121 Marketplace Avenue, Building 1, Suite 165
Plum Creek Business Park • Kyle • TX 78640

www.depurecousa.com
info@depurecousa.com



12 HP
POWER

5,900 in²
FILTER

26 gal
CAPACITY



H 14 HEPA FILTER

 4,400 in²

POWERFUL SIDE CHANNEL BLOWER
480V
Max Airflow= 390 CFM
Max Depression= 130 inH2O



M CLASS
Antistatic star filter



MTF OPTIONAL
For difficult and sticky dust.

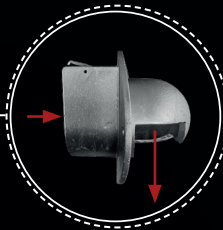


5,900 in²

OPTIONAL TANGENTIAL INLET



INLET WITH DEFLECTOR



MANUAL SHAKER CLEANING SYSTEM

Smart handle for shaking the filter aggressively to release dust.



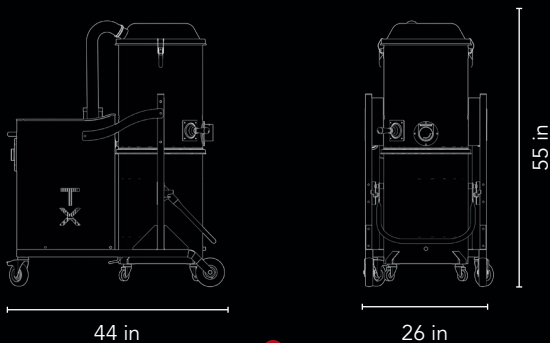
26 gal

DETACHABLE BIN ON WHEELS

COMPLETELY GROUNDED COMPONENTS



HIGHLY TRANSPORTABLE



Weight: 419lbs

COMPLIANT TO


NFPA 660
Standard for Combustible Dusts and Particulate Solids
Compliant


HAZ LOC
CLASS II DIV 2

UL121201
Nonincendive Electrical Equipment for Use in Class I and II, Division 2 and Class III, Divisions 1 and 2 Hazardous (Classified) Locations.

CSA22.2#213
Nonincendive Electrical Equipment for Use in Class I and II, Division 2 and Class III, Divisions 1 and 2 Hazardous (Classified) Locations

SPEC SHEET

NORMATIVE REFERENCES

	Units	TX 750P C2 D2
Suction type		Side channel blower
Power	HP	12
Voltage Frequency	V Hz	480 60
Vacuum in continuous use	inH ₂ O	130
Maximum air flow	CFM	390
Inlet	Ø in	2 3/4
Noise level - (EN ISO 3744)	dB(A)	79
Bin capacity	gal	26
Dimensions	in	26 x 44
Height	in	55
Weight	lb	419
Primary filter		
Type		Star
Surface area (Class EN 60335-2-69)	in ²	5,900 M Class
Media		Antistatic polyester
Filter cleaning		Manual Shaker
Absolute filter		
(Class - EN 1822)		H14
Media		Fiberglass
Surface area	in ²	4,400

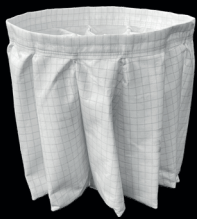
COMPLIANT TO

- NFPA 660
- NFPA 79
- UL121201
- CSA22.2#213

OPTIONAL FILTERS



BFL
M class filter



ANT M
Antistatic filter



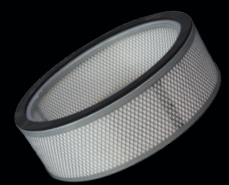
MTF
Teflon filter



NOMEX
482° F Resistant filter

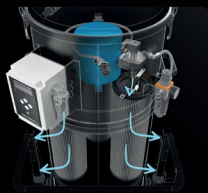


PTFE
PTFE filter



H 14
Absolute filter

OPTIONAL



SP
Automatic filter cleaning system



TAN
Tangential inlet + cyclone



BX
AISI 304 stainless steel bin



GX
AISI 304 BIN AND CHAMBER



TX
AISI 304 STRUCTURE, BIN AND CHAMBER



FLT
Floating device for liquids

ACCESSORIES



Iron reducer
Ø 2.75 / 2 in



Wet & Dry Kit
Ø 2 in



Starter Kit
Ø 2 in