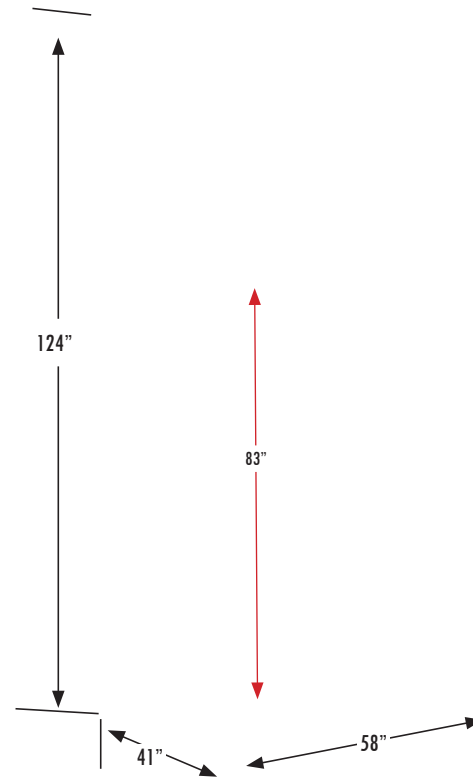




SINGLE UNIT SPECIFICATIONS

Filter Cartridges: (4) Cellulose Flame Retardant Media
Filter Media : 226 sq. ft of media each, totaling 904 sq. ft of media
Motor/Blower: 5 HP, Direct Drive, Backward Incline Blower
Electrical Requirements: 3 Ph: 208, 240, or 460 Volt, 6A-19A
Air Flow: 4,000 CFM
Built-in Spark Arrestance: (2) 24"x24"x2" Metal Spark Baffle
(2) 24"x24"x2" Metal Mesh
Pulse Valve: (2) 1" Pulsing Valves, Pulse Controller for automatic or manual operation
Compressed Air Requirements: 1" NPT compressed Air Connection; 70-90 PSI Required
Silencing: Internal Noise Abatement in Motor/Blower Compartment, 60-74 DBA
Internal Work Area: Now featuring 12" additional height available inside the work area with a 12" built-in riser
Weight: 1,600 lbs
Dimensions of Booth: Standard 5': 124"H x 58"W x 41"D
HMI Interface and remote access standard on all models (requires ethernet connection)



Standard Features

VFD: A Variable Frequency Drive for soft start and increased motor life.
Economizer: Automatic start/stop based on welding arc and automates with filter change alerts based on filter status
Electrical: NEMA 12 Electrical Enclosure with integrated disconnect switch, motor starter, overload, and start/stop button.
Heavy Duty Construction: Fully welded 12 gauge steel.
Table: 2-position adjustable work table
Built-in 12" riser adds 12" to interior work area
New HMI interface accessible from phone or tablet
Remote access for monitoring multiple units simultaneously from 1 screen

Blower & Motor

- Blower: Backward incline, air foil high efficiency
- Direct drive, no belts or chains
- Three phase power ~ 3 Ph. : 208, 240, or 460 Volt, 6A - 19A
- 5HP motor, 3,450 RPM
- Air volume 4,000 CFM

Fire Protection

- Flame Retardant Filter Material
- Integrated / removable spark arresters:
(2) 24"x24"x2" Metal Mesh
(2) 24"x24"x2" Spark Baffles.
- Clean Air Fire Suppressor™ option

Optional Features

Weld Curtain: Better containment of smoke.

Second LED Light

Other Options: Fume Arm, Down Draft Table, and tool drawer, colors (CAA Blue, Black, Yellow, addtl upcharge for Red, custom)

Nano Fiber Filters: MERV 15 rated filter for increased filtration and life span.

Positioners: Overhead and Floor mounted positioners available.

